

# 9th Annual ARKWIPP Field Workshop - 2017

*Arkansas River Watershed Invasive Plant Partnership*

## Take Back Your Land!

*Noxious Weed and Restoration Strategies*

Wednesday April 5<sup>th</sup>, 2017 • Trinidad, Colorado

8:30 am – 4 pm

\$20 per person (includes morning refreshments, lunch, drinks, snacks)

Register Online at <http://tamariskcoalition.wildapricot.org/event-2466961>

For workshop information, please contact [ssimmons@tamariskcoalition.org](mailto:ssimmons@tamariskcoalition.org)

### Sponsors



**COLORADO**

Colorado Water  
Conservation Board

Department of Natural Resources



# Workshop Agenda

## Classroom Session – Trinidad State Junior College, Sullivan Student Center, Pioneer Room

**8:30 a.m.** Check in and Coffee/Refreshments

**9:00-9:15** Welcome/Introductions

**9:15-9:45** **The Kochia Verdict**

***Dr. Scott Nissen, Colorado State University***

Most people have a love-hate relationship with kochia (a prolific annual broadleaf weed), but in the context of restoring land back to native vegetation, kochia is often the factor that determines success or failure. This session will focus on managing kochia in order to achieve successful land restoration.

**9:45-10:15** **Russian knapweed and Canada thistle control in irrigated crop and river/stream scenarios**

***Fred Raish, Alligare***

Fact: Russian knapweed and Canada thistle are a serious threat to the economy of Las Animas County. Accurate infestation acreages are not currently available, but it is likely that these plants now occupy several thousand acres in Las Animas County – a loose, loose situation. Learn about these plants and strategies for control in various crop and river bottom situations.

**10:15-10:30** Break

**10:30-11:00** **Getting to know the tamarisk leaf beetle**

***Ben Bloodworth, Tamarisk Coalition***

What is the tamarisk leaf beetle and what effect does it have on tamarisk? Updates on where beetles are in Southeastern Colorado and the Front Range in general, as well as movement in northern New Mexico and Kansas. Will include discussion of beetle behavior (e.g. why we saw explosion of beetles in 2011-2014, but waned in 2015/2016 – why the ups and downs?)

**11:00-12:15** **Weed Managers Panel**

***Jana Rapetti, Fremont Co.; Kayla Malone, Chaffee Co.; Marisa Neuzil, Teller-Park Conservation District; Tina Travis, El Paso Co.; Bob Lucero, Las Animas Co.***

Successful noxious weed programs are at best hard to establish and remain financially sustainable over time. This panel of experienced weed managers will share their programs' successes and challenges and how they have managed to maintain noxious weed programs over the long-term.

**12:15-12:45** **Lunch (Provided at Trinidad State Junior College)**

**12:50-1:20** **Monitoring project success – Simple techniques for land managers and land owners**

***Robin Bay, Habitat Management Inc.***


Most granting agencies now require post-treatment monitoring as a project component. However, most land managers and land owners do not have experience collecting data to track project progress. This session will provide guidance on how to select and implement monitoring techniques that are fast, user-friendly, and provide meaningful measures of progress toward project goals.

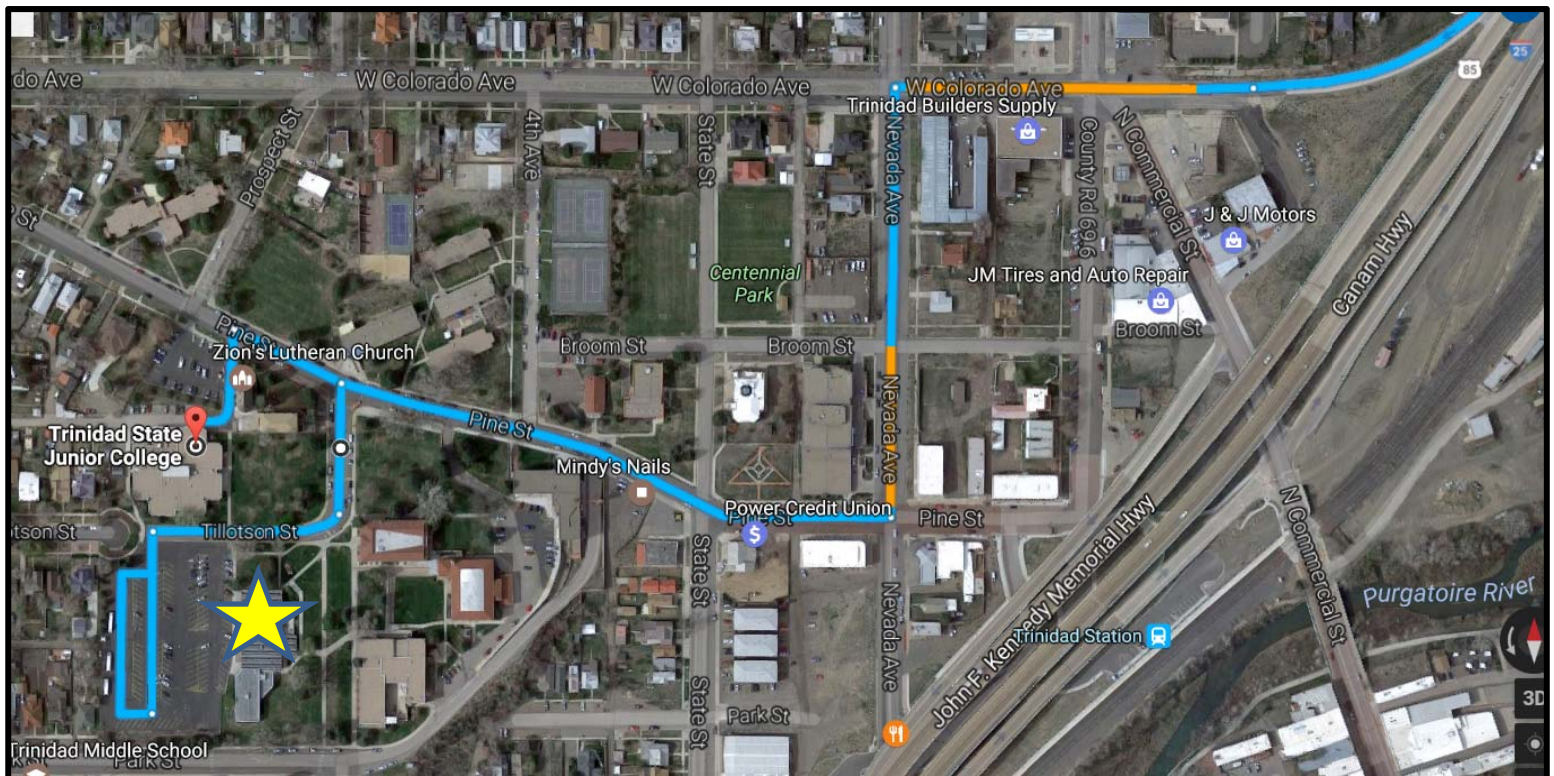
## Field Session – Miller Property, Hoehne

- 1:30-1:50      Carpool to field Site
- 2:00-2:30      Monitoring Techniques Continued – Field Demo  
*Robin Bay, Habitat Management Inc.*
- 2:30-3:45      River Restoration Project Site  
*Tom Miller, Landowner's Perspective*  
*Ron Jameson, Chaparral Construction – Mechanical mulching/root extraction demo*  
*James Duran, NRCS and Tom Miller – Seeding Demo: Broadcast/Grass Drill/ and*  
*No-till drill (tentative)*
- 3:45-4:00      Wrap-up

## Directions

### Directions from I-25 to the TSJC Student Center (Source - Google Maps):

- Take Exit 14B onto W. Colorado Ave.
- Turn South onto Nevada Ave.
- Turn West onto Pine Str.
- Turn South onto Tillotson Str.
- This will dead-end at the Student Center Parking Lot – park here 
- The Pioneer Room is to the right as you enter the main entrance
- TSJC Campus Map: <http://www.trinidadstate.edu/about-trinidad-state/locations/trinidad-campus>



**Directions from TSJC to Field Site (Source - Google Maps):**

- Take Pine Street and Exit onto I-25 North
- Take Exit 15 East – Hwy 350/160 Kit Carson Bypass
- Turn northeast onto Hwy 350/160
- Travel approx. 10 miles to 20981 Hwy 350
- Enter the property on the EAST side of the Hwy – Orange flagging will be tied to the hwy fence posts

